



Operation Manual



www.universal-space.com

CONTENTS

Important Safety Instructions.....2

1. SPECIFICATIONS.....4

2. PACKAGE CONTENTS.....5

3. PART NAMES.....7

4. SET UP & INSTALLATION.....8

5. HOW TO PLAY11

6. GAME OPTION12

7. MAINTENANCE, INSPECTION.....16

8. OVERALL CONSTRUCTION17



WARNING

Non-technical personnel who do not have technical knowledge and Expertise should refrain from performing such work that this manual require or perform tasks which are not explained in this manual. Failing to comply can cause severe accidents such as electric shock or other serious injuries. All repairs must be performed to original manufacturer specifications.

WARNING: To reduce the risk of fire, electric shock or personal injury, unplug or disconnect the machine from the power supply before servicing.

Thank you for purchasing **Hammer Froggie**. We hope you enjoy the product.

This manual contains valuable information about how to operate and maintain your game machine properly and safely. It is intended for the owner and/or personnel in charge of product operation. Carefully read and understand the instructions.

If you need any help during installation and setup please utilize this manual and troubleshooting guide. If the product fails to function properly, *non-technical personnel should under no circumstance attempt to service the machine*. Contact your distributor or manufacturer for help. Before use, please read **IMPORTANT SAFETY INSTRUCTIONS**.

IMPORTANT SAFETY INSTRUCTIONS

To ensure the safe usage of this product, carefully read and understand these instructions before operating your game.

Save these instructions for future reference.

Use this product only as described in this manual. Other uses not recommended may cause fire, electric shock or personal injury. Unplug the game from the outlet when not in use, when moving from one location to another, and before cleaning/servicing.

Explanations which require special attention are indicated by signs of warning. Depending on the potential hazardous degree, the terms: **NOTE**, **NOTICE**, and **WARNING** are used.

NOTE: A NOTE indicates useful hints or information about product usage.

NOTICE: A NOTICE indicates potential damage to product and how to avoid the problem.

WARNING: A WARNING indicates a potential for product damage or serious personal injury.

It is important to understand the meaning of the following HAZARD SIGNS before continuing:

High Voltage and Shock Hazard:

High voltage can cause electric shock.
Turn off/unplug power before servicing.



High Temperature Hazard:

This part may cause scalding.
Do not touch. Surface may be hot.



No Touching Hazard:

This part may be hot or can cause electric shock. Do not touch.
Use the following safety guidelines to help ensure your own personal safety and to help protect your equipment and surrounding environment from potential damage.





This product is an indoor game machine. Do not install outdoors.

Avoid installing in the following places to prevent fire, electric shock, injury and/or machine malfunctioning:

- Places subject to rain/moisture, or places subject to high humidity.
- Places subject to direct sunlight, or places subject to extremely hot or cold temperatures to ensure that it is used within the specified operating range.
- Places where inflammable gas may be present or in the vicinity of highly inflammable/volatile chemicals or items that can easily catch fire
- On unstable or sloped surfaces. The machine may topple or cause unforeseen accidents.
- Vicinity of fire exits, fire extinguishers etc that may block/prevent safety measures

IMPORTANT NOTE:

ALL REPAIRS MUST BE DONE TO ORIGINAL MANUFACTURER SPECIFICATIONS.

FAILURE TO DO SO VOID ALL WARRANTIES AND OPERATOR ASSUMES ALL RISKS.

1. SPECIFICATIONS



Rated power supply: AC110V 50Hz/60Hz

Min. power consumption: 140W

Max. power consumption: 160W

Dimensions: W24.8×D21.25×H53.15 (inches)





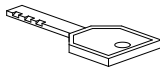
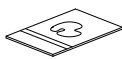
Weight: Approximately 291 (lbs)

Note: Game parameters are subject to change without notice.

2. PACKAGE CONTENTS

Open the package and make sure all the items are included:

- 1 x Body Assembly
- Following accessories

NO.	Part No.	Code	Name	Spec.	Illustration	QTY
1	H118-419-000	23301000039	Power cord	10A/250V-1.8M		1
2	H118-420-000	40807000001	Hexagon spanner	CR-V 4mm		1
3	H118-421-000	21901000016	Fuse	Φ 5x20mm T6A 125VAC		1
4	H118-424-000	25300171001	KEY	171		2
5	H118-425-000	25302222001	KEY	2222		2
6	H118-728-000	41411208001	Manual	English		1

If any items are found to be missing, please contact your sales representative for help immediately.

NOTE: Part models are subject to change without notice.

3. PART NAMES



3.1 How to Remove the Marquee.

Step 1: Open the back door and remove line deduction



Step 2: Remove 2 screws on the both sides.



Step 3: Follow the way that shown below to take the Marquee out.



Note: Follow the same way to put the marquee back.

4. SET UP & INSTALLATION

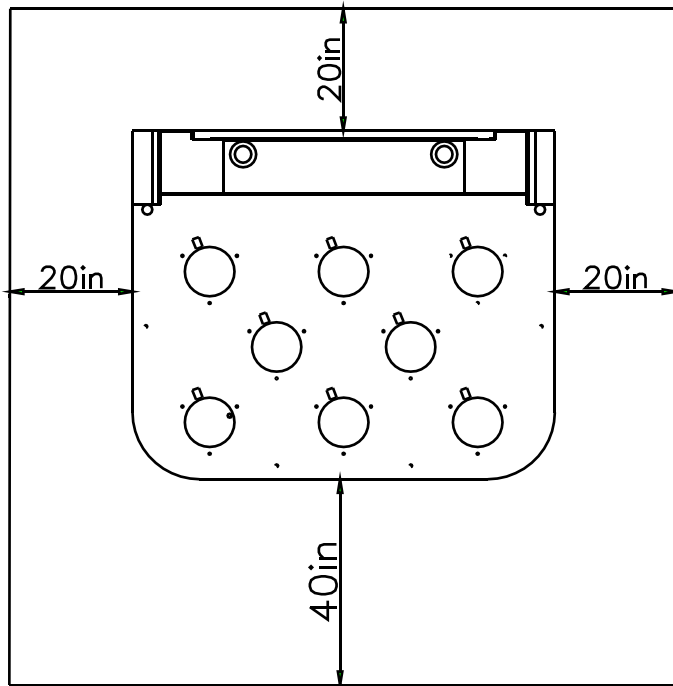
! This product is an indoor game machine. Do not install outdoors.

- Refer to IMPORTANT SAFETY INSTRUCTIONS (Pg. 3) for places to avoid
- Place the unit on a dry level surface
- Ventilation openings in the back of the unit must not be obstructed by objects or by wall.

4.1 Play Zone

This machine requires space for playing and for maintenance as shown below.

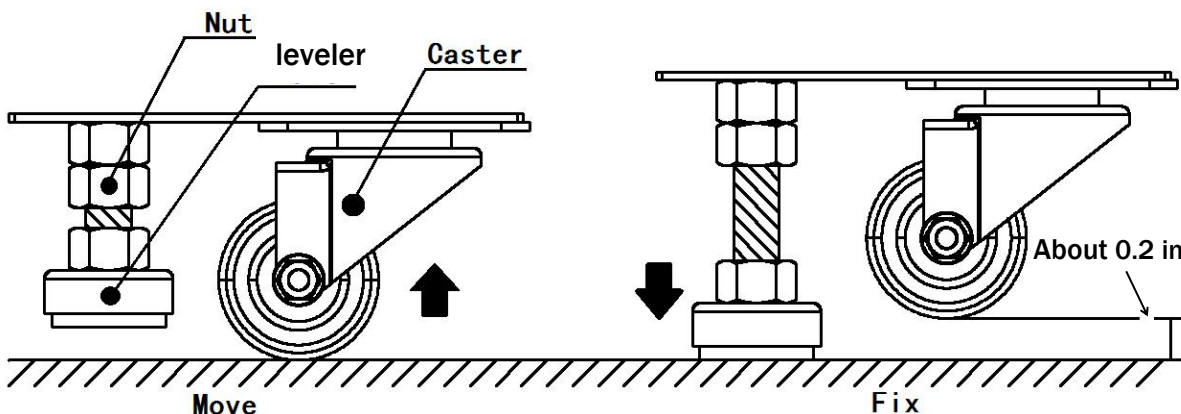
Leave space around the game upon installation:



4.2 Level Adjustment

Install this game on a flat surface. If the game is installed on an unsuitable floor, it could cause game malfunction.

To secure the game, loosen the nut, utilize wrench to adjust the leveler down until it touches the floor, lifting the casters off the ground by 0.2 in. Repeat the same for all levelers.



! NOTICE

Make sure the machine is level.


4.3. Transporting the Game

If you need to move the game, adjust the levelers back to an “up” position so the casters touch the ground.

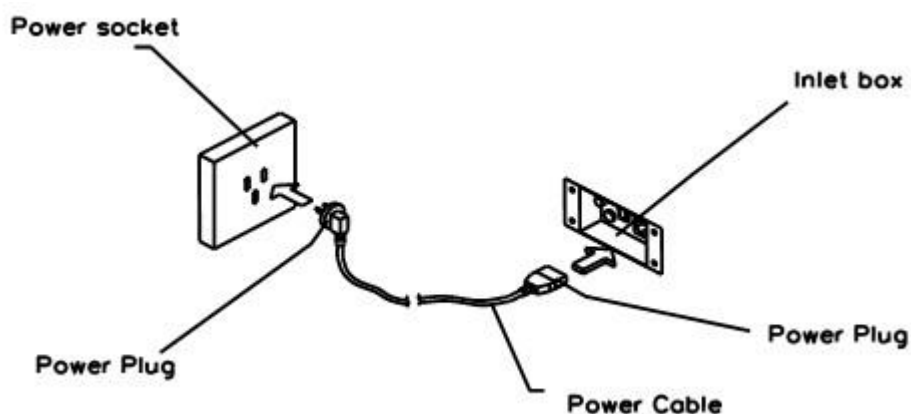
NOTICE

- Be careful not to damage the machine during transport.
- The machine should be handled with care when bringing it down from a higher level.
- Always unplug the game before moving.
- Keep the machine in upright position during transport.
- For longer distance transport, package the game properly to prevent damages

4.4 Connecting Power

 **WARNING:** Check the voltage rating before you connect the equipment to an electrical outlet to ensure that the required voltage and frequency match the available power source. Please refer the label of the machine.

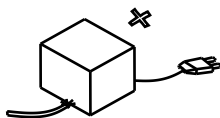
- Do not plug the equipment power cables into an electrical outlet if the power cable is damaged.
- Avoid putting many loads on one electrical outlet as it could generate heat and fire resulting from overload.
- Connect the grounding conductor to the earth terminal (GND):



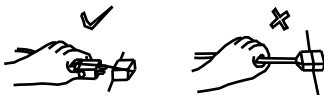


WARNING

Ensure no heavy objects rest on the power cord. Check to make sure the game cabinet does not sit on the power cord as this could damage the cord and become hazardous.



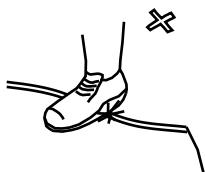
To disconnect the game, grip the plug and pull it from the wall outlet. Never pull by the cord.



To prevent electric shock, do not touch the power plug when hand is wet.



Ensure that nothing rests on the power cord and that it is not located where it can be stepped on or tripped over.



5. GAME OPTION

5.1 To enter the test method:

Press TEST button in the PCB to get into the test menu:

5.2 Test method:

LED displays 8.7.6.5.4.3.2.1.and 87654321, test the LED display is correct or not;

Press TEST button again, it will show 1, 1#, 1,2 LED displays DIP status;

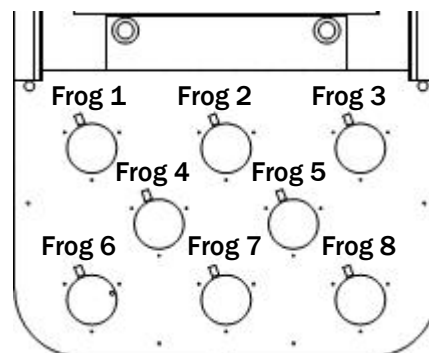
Press TEST button again and LED displays 2, it shows the number of on-off SW,two digits equal 1 SW number;

Press TEST button again, it shows 3;

Press TEST button again, it shows 4, hold IN1-40 and it shows OUT1-40 corresponding output;

Press TEST button again, it shows 5, then OUT1-40 corresponds lighting output;

Press TEST button again, it shows 6.



5.3 Error code:

If the input signal is abnormal when starts the machine, the following code will be displayed. The code is off after alarm.

Error Code	Potential cause	Solution
E01	Frog 1 sensor or electromagnet malfunction	Change frog 1 sensor or electromagnet
E02	Frog 2 sensor or electromagnet malfunction	Change frog 2 sensor or electromagnet
E03	Frog 3 sensor or electromagnet malfunction	Change frog 3 sensor or electromagnet
E04	Frog 4 sensor or electromagnet malfunction	Change frog 4 sensor or electromagnet
E05	Frog 5 sensor or electromagnet malfunction	Change frog 5 sensor or electromagnet
E06	Frog 6 sensor or electromagnet malfunction	Change frog 6 sensor or electromagnet
E07	Frog 7 sensor or electromagnet malfunction	Change frog 7 sensor or electromagnet
E08	Frog 8 sensor or electromagnet malfunction	Change frog 8 sensor or electromagnet
E09	Ticket dispenser reset button error	Replace with proper button.
E10	Service button error	Replace with proper button.
E83	Ticket dispenser 1 error	Clear the ticket jam. Replace with a proper ticket dispenser.
HLP	Out of tickets.	load tickets.

Note: Error codes will be displayed on SCORE LED display on the play area panel.

6. Parameter Setting:

(1) Coin per game:

Item	Content	DIP SW1			Note
		1	2	3	
Coin per game	0	ON	ON	ON	
	1	off	on	on	
	2	on	off	on	
	3	off	off	on	
	4	on	on	off	
	1/2	off	on	off	
	1/3	on	off	off	
	1/4	off	off	off	

(2) Play time

Item	Content	DIP SW1			Note
		4	5	6	
Coin per game	30S	ON	ON	ON	
	35S	off	on	on	
	40S	on	off	on	
	45S	off	off	on	
	50S	on	on	off	
	60S	off	on	off	
	75S	on	off	off	
	90S	off	off	off	

(3) Demo music

Item	Content	DIP SW1		Note
		7	8	
Demo music	120s	on	on	
	180s	off	on	
	240s	on	off	
	OFF	OFF	OFF	

(4) Bonus play

Item	Content	DIP SW2	Note
		1	
Bonus play	YES	ON	
	NO	off	

(5) Bonus pass score

Item	Content	DIP SW2			Note
		2	3	4	
Bonus pass score	50	ON	ON	ON	
	60	off	on	on	
	80	on	off	on	
	100	off	off	on	
	120	on	on	off	
	135	off	on	off	
	150	on	off	off	
	180	off	off	off	

(6) Bonus time

Item	Content	DIP SW2			Note
		5	6	7	
Coin per game	10	ON	ON	ON	
	15	off	on	on	
	20	on	off	on	
	25	off	off	on	
	30	on	on	off	
	35	off	on	off	
	40	on	off	off	
	45	off	off	off	

(7) Difficulty:

Item	Content	DIP SW2	Note
		8	
Difficulty	Easy	ON	
	Hard	off	

(8) Points per ticket

Item	Content	DIP SW3				Note
		1	2	3	4	
Points per ticket	5	ON	ON	ON	ON	
	10	off	on	on	on	
	15	on	off	on	on	
	20	off	off	on	on	
	25	on	on	off	on	
	30	off	on	off	on	
	35	on	off	off	on	
	40	off	off	off	on	
	45	on	on	on	off	
	50	off	on	on	off	
	55	on	off	on	off	
	60	off	off	on	off	
	65	on	on	off	off	
	70	off	on	off	off	
	75	on	off	off	off	
80	off	off	off	off		

(9) Points per hit

Item	Content	DIP SW3		Note
		5	6	
Points per hit	1	ON	ON	
	2	off	on	
	3	on	off	
	4	off	off	

(10) Fix ticket

Item	Content	DIP SW4	Note
		1	
Fix ticket	NO	ON	
	YES	off	

(11) Fix ticket payout

Item	Content	DIP SW4				Note
		2	3	4	5	
Fix ticket payout	1	ON	ON	ON	ON	
	2	off	on	on	on	
	3	on	off	on	on	
	4	off	off	on	on	
	5	on	on	off	on	
	6	off	on	off	on	
	7	on	off	off	on	
	8	off	off	off	on	
	9	on	on	on	off	
	10	off	on	on	off	
	11	on	off	on	off	
	12	off	off	on	off	
	13	on	on	off	off	
	14	off	on	off	off	
	15	on	off	off	off	
	16	off	off	off	off	

(12) Mercy ticket

Item	Content	DIP SW2			Note
		6	7	8	
Mercy ticket	0	ON	ON	ON	
	1	off	on	on	
	2	on	off	on	
	3	off	off	on	
	4	on	on	off	
	5	off	on	off	
	6	on	off	off	
	7	off	off	off	



Notice

The above are subject change without notice.

7. MAINTENANCE, INSPECTION

7.1 Safety Check

Check the points listed before operating the machine. These checks are necessary for safe machine operation:

1. Try to run the game before operation each day.
2. Conduct monthly routine checks of game components to ensure good working condition
3. Check the machine regularly for dust and clean when necessary.

Note: Parts and components require preventative maintenance to be kept running smoothly

7.2 Handling Precautions

When installing or inspecting the machine, be very careful of the following points and pay attention to ensure that the player can enjoy the game safely.

Non-compliance with the following points or inappropriate handling running counter to the cautionary matters herein stated can cause personal injury or damage to the machine

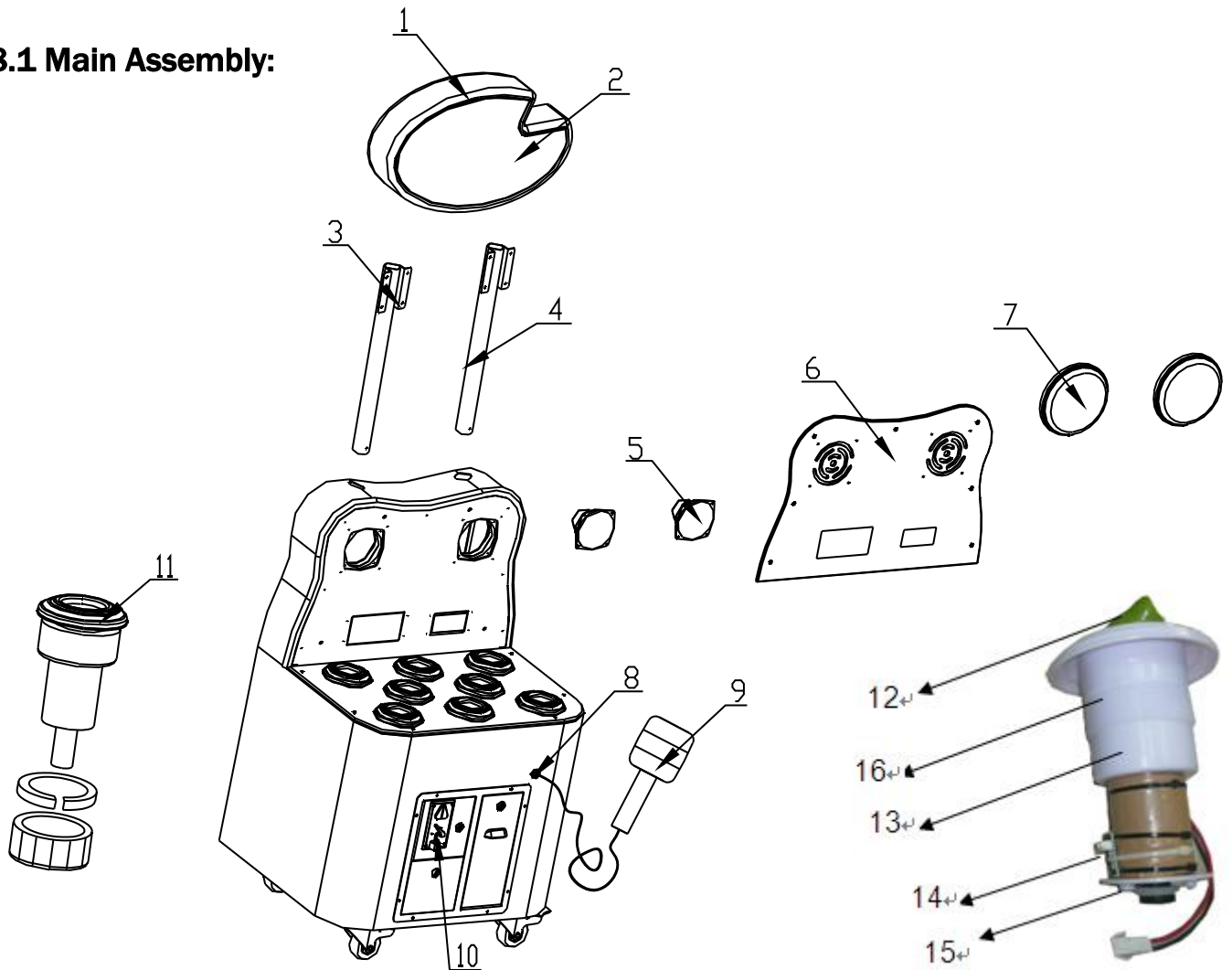


WARNING

- Before servicing the machine, be sure to turn power off. Servicing without turning the power off can cause electric shock or short circuit.
- To avoid electric shock or short circuit, do not plug then unplug the power quickly
- Do not expose power cords and earth wires, these are susceptible to damage.
- Damaged cords and wires can cause electric shock or short circuit and should be replaced immediately.
- When or after installing the product, avoid pulling the power cord to prevent unnecessary wear and tear. Use the power button to disconnect power.
- In case the power cord is damaged, ask for replacement through where the product was purchased from or replace locally. Continued usage of damaged cord can cause fire, electric shock or leakage.
- Perform grounding appropriately. Inappropriate grounding can cause electric shock.
- Use fuses that meet specified rating. Fuses exceeding can cause an electric shock.
- Should a problem occur, turn off the power immediately and stop operating the machine. Unplug the power cord of the service outlet. Operating the machine without correcting the problem may cause a fire or injuries.
- Insert the power plug securely into the outlet. Poor contact may cause overheating, resulting in fire or burns.
- To ensure the warning labels attached on the machine are visible and legible, install the machine in a well-lit location, and keep the labels clean at all times. Make sure the labels are not hidden behind other game machines.

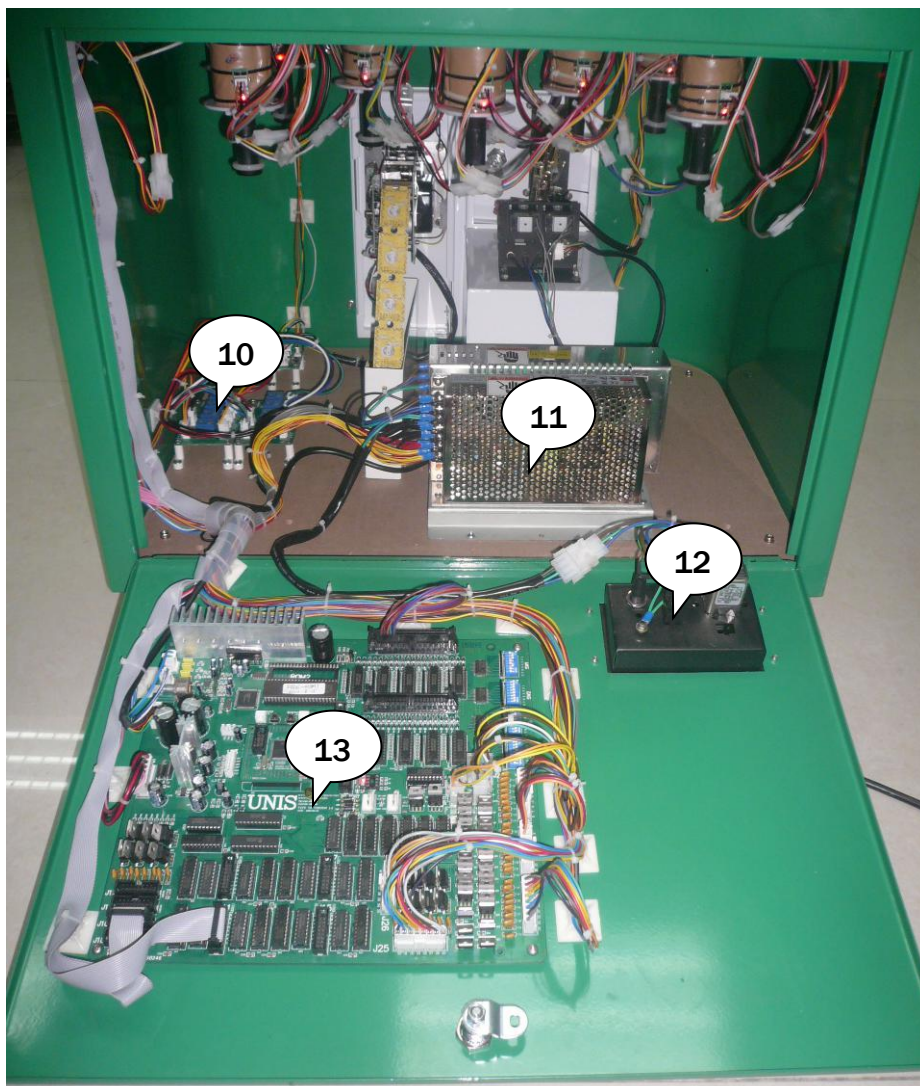
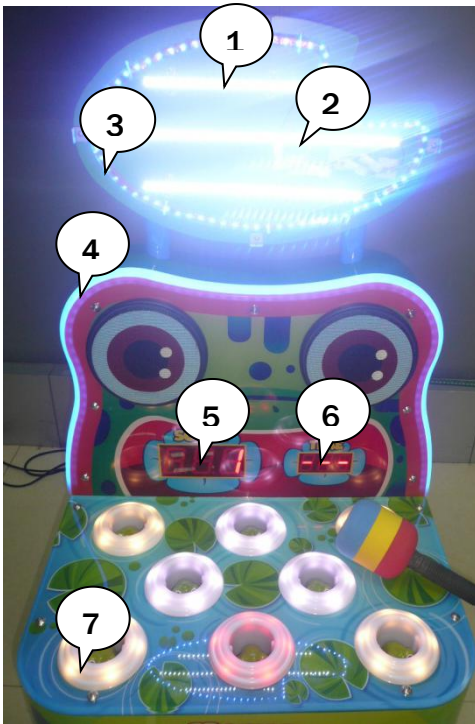
8. OVERALL CONSTRUCTION

8.1 Main Assembly:



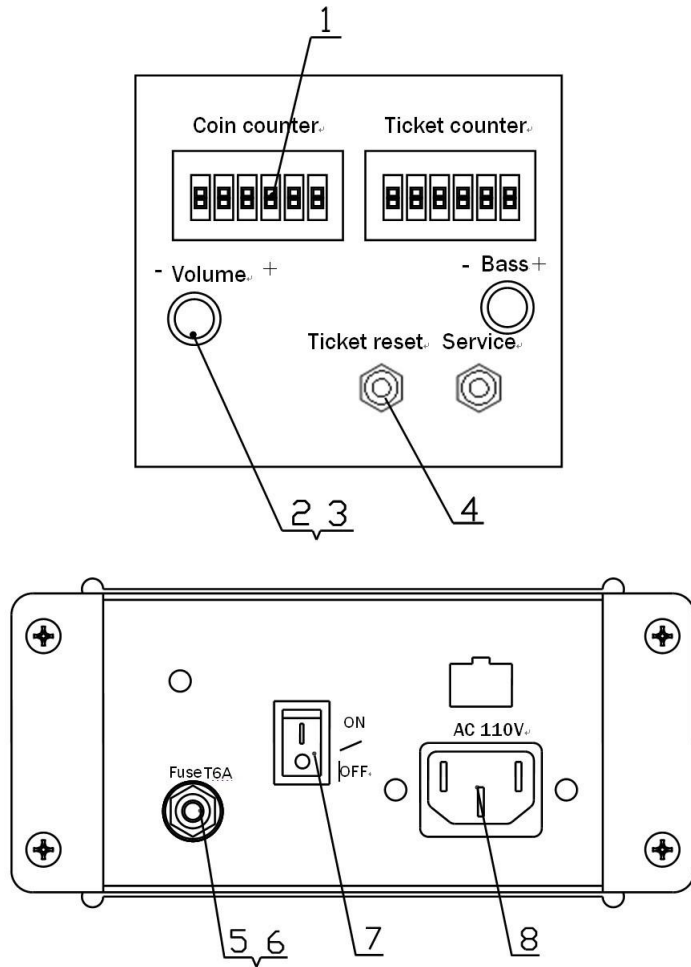
No.	Part No.	code	Name	QTY
1	H118-601-000	20611208002	Marquee Plastic	1
2	H118-701-000	20511208001	Marquee decal	1
3	H118-101-000	20211208006	Marquee fixed block	4
4	H118-102-000	20211208003	Marquee column	2
5	H118-401-000	22801000005	Speaker	2
6	H118-703-000	20511208002	Main decal	1
7	H118-702-000	20511208004	Speaker net	2
8	H118-103-000	20211208005	Copper sleeve	1
9	H118-402-000	20211208016	Sponge hammer	1
10	H118-001-000	29911208001	Coin Assy.	1
11	H118-403-000	20811208001	Frog head suite	8
12	H118-424-000	20811208002	Froggy head and Shaft	1
13	H118-425-000	20811208003	Assy-frame	1
14	H118-426-000	20811208004	Froggy sensor	1
15	H118-427-000	20811208005	Washer	1
16	H118-428-000	20811208006	Coil	1

8.2 Electronic component:



NO	Part NO.	Code	Name	QTY
1	H118-801-000	21704000220	Glue tank light board	2
2	H118-802-000	21704000221	Glue tank light board	1
3	H118-803-000	22002013002	RGB Flexible lamp tape	1
4	H118-404-000	25107020001	Strip light	1
5	H118-804-000	21706000037	2.3" Three digit digital board	1
6	H118-805-000	21706000032	1.5" Three digit digital board	4
7	H118-806-000	20711208001	PCB	8
8	H118-405-000	23100000005	Ticket mech	1
9	H118-406-000	22301000001	Coin mech	1
10	H118-407-000	20710831005	Relay	1
11	H118-408-001	21602000114	Power box	1
12	H118-409-000	21602000003	Power box	1
13	H118-807-000	21701000014	Main board	1

Counter & Wire box:



No.	Part No.	Code	Name	Qty.
1	H118-410-000	23000000005	Counter	2
2	H118-411-000	22403000001	Pot. knob	1
3	H118-412-000	21709000002	Pot. Connct board	1
4	H118-413-000	22402030002	Button	1
	H118-414-000	22402010002	Button	1
	H118-415-000	22402050001	Button	1
5	H118-416-000	21901000010	Fuse	1
6	H118-417-000	21902000006	Fuse holder	1
7	H118-418-000	22601000005	SW	1
8	H118-429-000	23200000001	Noise filter	1

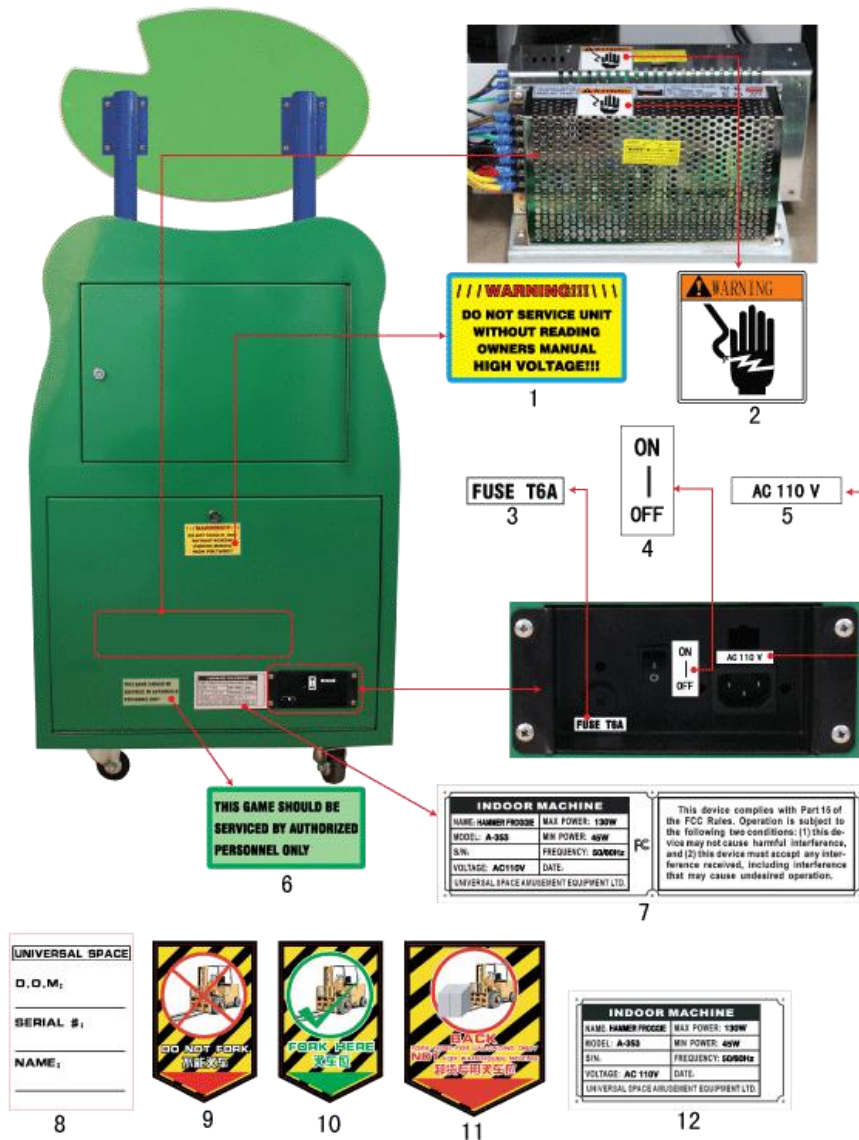
8.3 Game decal

FRONT VIEW:

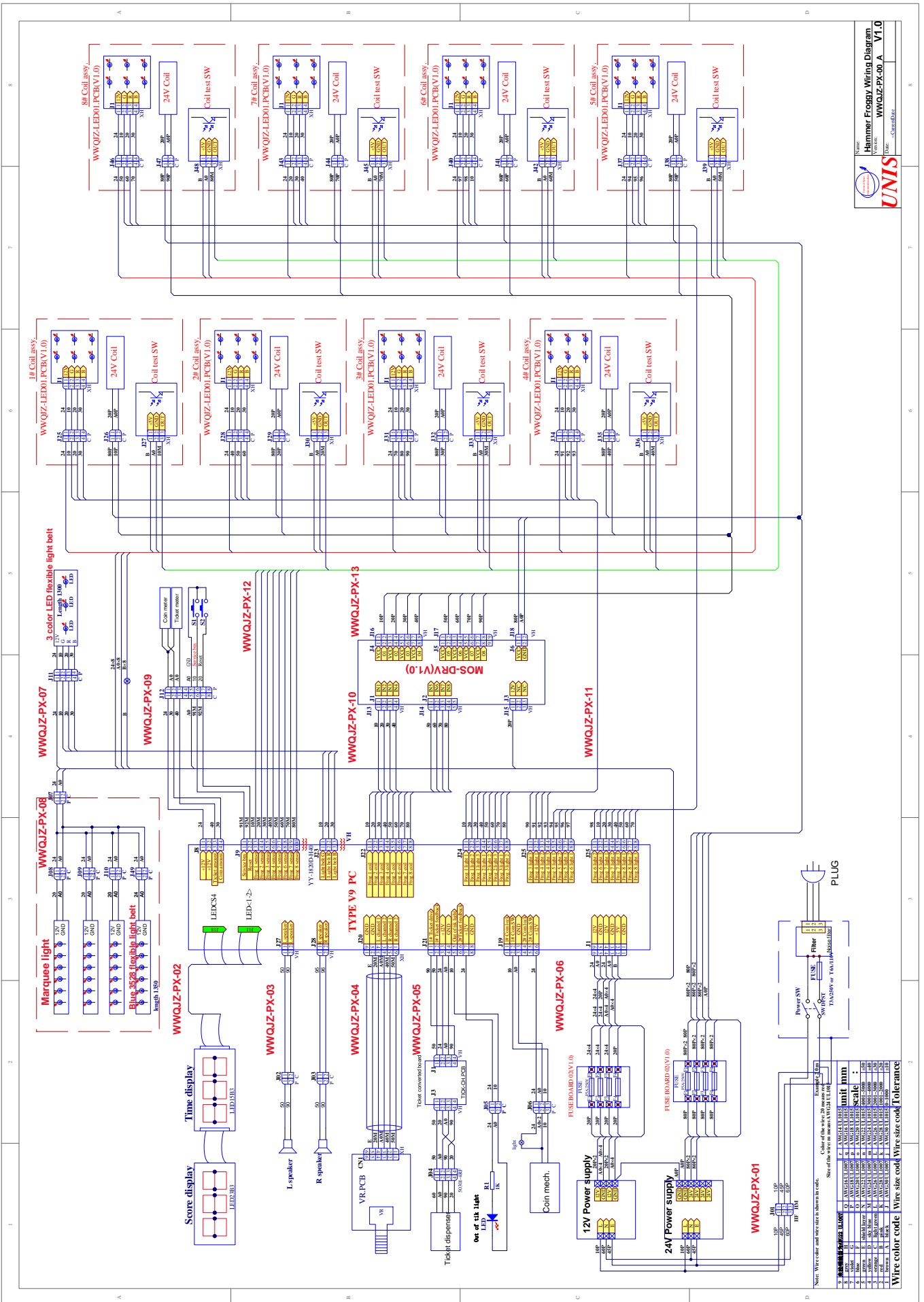


NO.	Part No.	Code	Name	Qty
1	H118-729-000	20511208001	Marquee decal	1
2	H118-702-000	20511208004	Speaker net decal	2
3	H118-703-000	20511208002	Main decal	1
4	H118-704-000	20511208003	Control panel decal	1
5	H118-705-000	20511208006	Left side decal	1
6	H118-730-000	20511208005	Front door decal	1
7	H118-707-000	20511208007	Right side decal	1
8	H118-708-000	25600000034	Ticket label decal	1
9	H118-709-000	25600000003	Volume label	1
10	H118-710-000	25600000001	Coin counter label	1
11	H118-711-000	25600000002	Ticket counter label	1
12	H118-712-000	25600000008	Ticket reset label	1
13	H118-713-000	25600000009	Service button	1

Back VIEW:



NO.	Part No.	Code	Name	Qty
1	H118-714-000	25600000042	Service note label1	1
2	H118-715-000	25600000036	High voltage warning(small)	2
3	H118-716-000	25600000012	Fuse T6A	1
4	H118-717-000	25600000016	Power SW label A	1
5	H118-718-000	25600000040	Label 110V	2
6	H118-720-000	25600000042	Service label 1	1
7	H118-721-000	20511208010	FCC Certified nameplate	1
8	H118-722-000	25600000063	Packaging Information label	1
9	H118-723-000	25600000064	Not forklift label	1
10	H118-724-000	25600000065	Forklift position label	1
11	H118-725-000	25600000066	Unloading forklift position label	1
12	H118-726-000	20511208011	110V nameplate	1



UNIS
 Hammer Froggy Wiring Diagram
 Version: WWQJZ-PX-00-A V1.0
 © 2014 UNIS

Note: Wire color and size refers to standards in table.

Wire size	Wire color	Wire size code	Wire size code	Tolerance
0.5	AWG24 (UL100)	0.5	AWG24 (UL100)	±0.05
0.75	AWG22 (UL100)	0.75	AWG22 (UL100)	±0.05
1.0	AWG20 (UL100)	1.0	AWG20 (UL100)	±0.05
1.5	AWG18 (UL100)	1.5	AWG18 (UL100)	±0.05
2.0	AWG16 (UL100)	2.0	AWG16 (UL100)	±0.05
2.5	AWG14 (UL100)	2.5	AWG14 (UL100)	±0.05
3.0	AWG12 (UL100)	3.0	AWG12 (UL100)	±0.05
4.0	AWG10 (UL100)	4.0	AWG10 (UL100)	±0.05
5.0	AWG8 (UL100)	5.0	AWG8 (UL100)	±0.05
6.0	AWG6 (UL100)	6.0	AWG6 (UL100)	±0.05
8.0	AWG4 (UL100)	8.0	AWG4 (UL100)	±0.05
10.0	AWG2 (UL100)	10.0	AWG2 (UL100)	±0.05

Color of the wire: 20 meters max. Size of the wire in mm: AWG (UL100)

WE ARE HERE TO ASSIST
For parts and service



Have Questions? Contact us!

UNIS SERVICE CENTER

Tel: 972-241-4263

Email: service@unispartsandservice.com